



RIVER ISLAND

BY NOVAL PROPERTIES

AN EXCLUSIVE INVESTMENT AND
LIFESTYLE DESTINATION



There is a space where your investment acquires the best form and the best benefits. River Island, enjoy the universe that offers you "the great Atlántida".



CONTENT

01 **FORMIDABLE AND ENCHANTING**

02 **LOCATION**

03 **GRANDEUR IN DETAILS
AND FINISHES**

04 **TYPES AND PROFITABILITY**



FORMIDABLE AND ENCHANTING

An innovative concept ideal for investment, which integrates your life experience with the best of nature.

Its spectacular design is composed by buildings that are interconnected by a series of pools, channels and recreational paths inside its magical tropical garden.



Bavaro, Punta Cana



1-2-3 Bedrooms



Elevator



540 Apartments



10,000 m² Pool



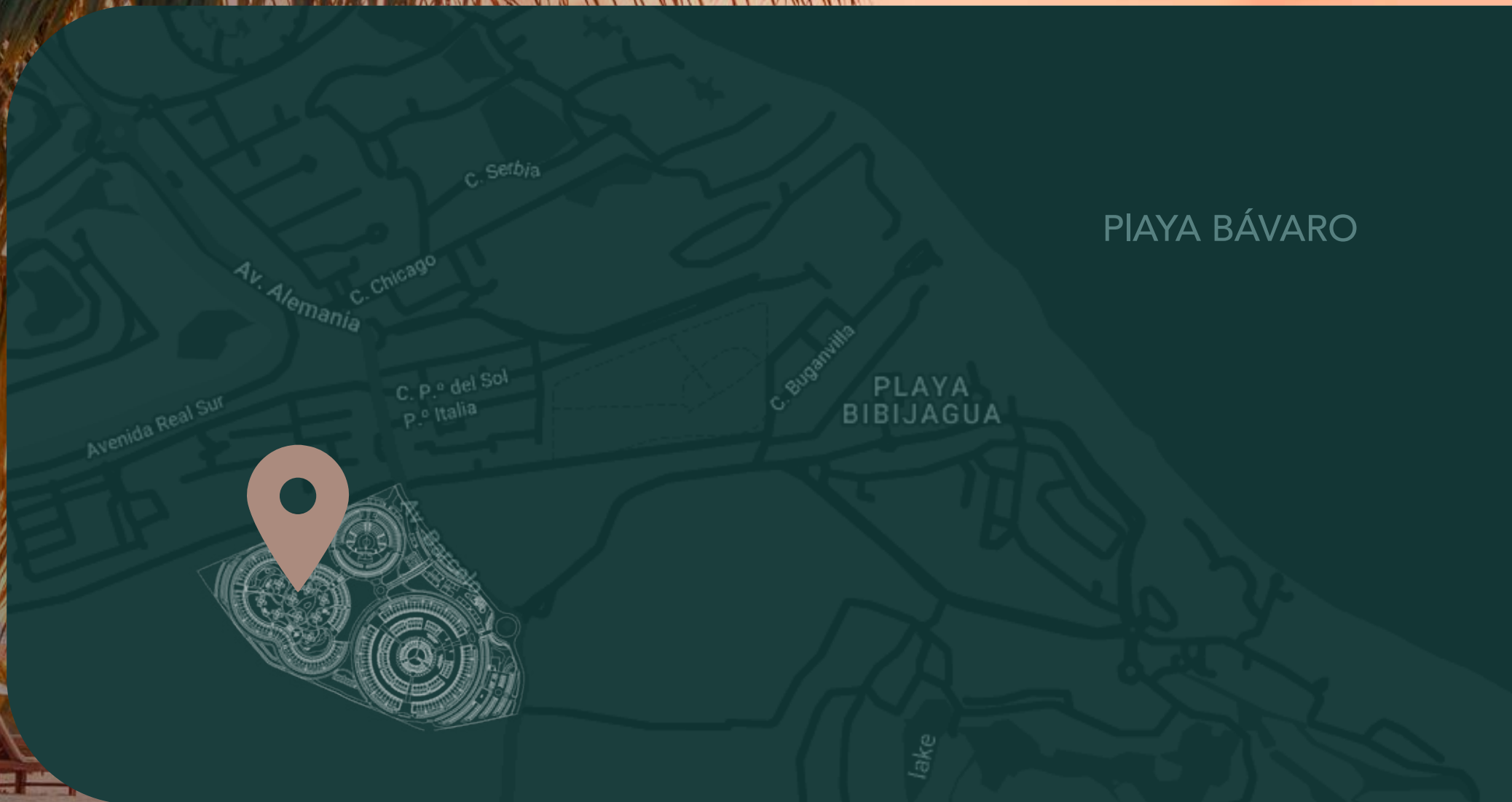




RIVER ISLAND

BY NOVAL PROPERTIES

located in a privileged area in Bávaro - Punta Cana, a few minutes from Bávaro Beach, right next to the new Katmandu theme park.



PIAYA BÁVARO



A GREAT DESTINATION

River Island is located a few minutes from the new Katmandu theme park. Close to the Punta Cana International Airport, with access to the main clinics, shopping malls and schools in the area. A mega destination, where all emotions flow around you.



AN EXCLUSIVE UNIVERSE



16 pools



Lobby



Tropical garden



Areas for BBQ and chill out



Gym



Shopping area



Tennis club



Green areas



Running circuit



Restaurants



Biking route



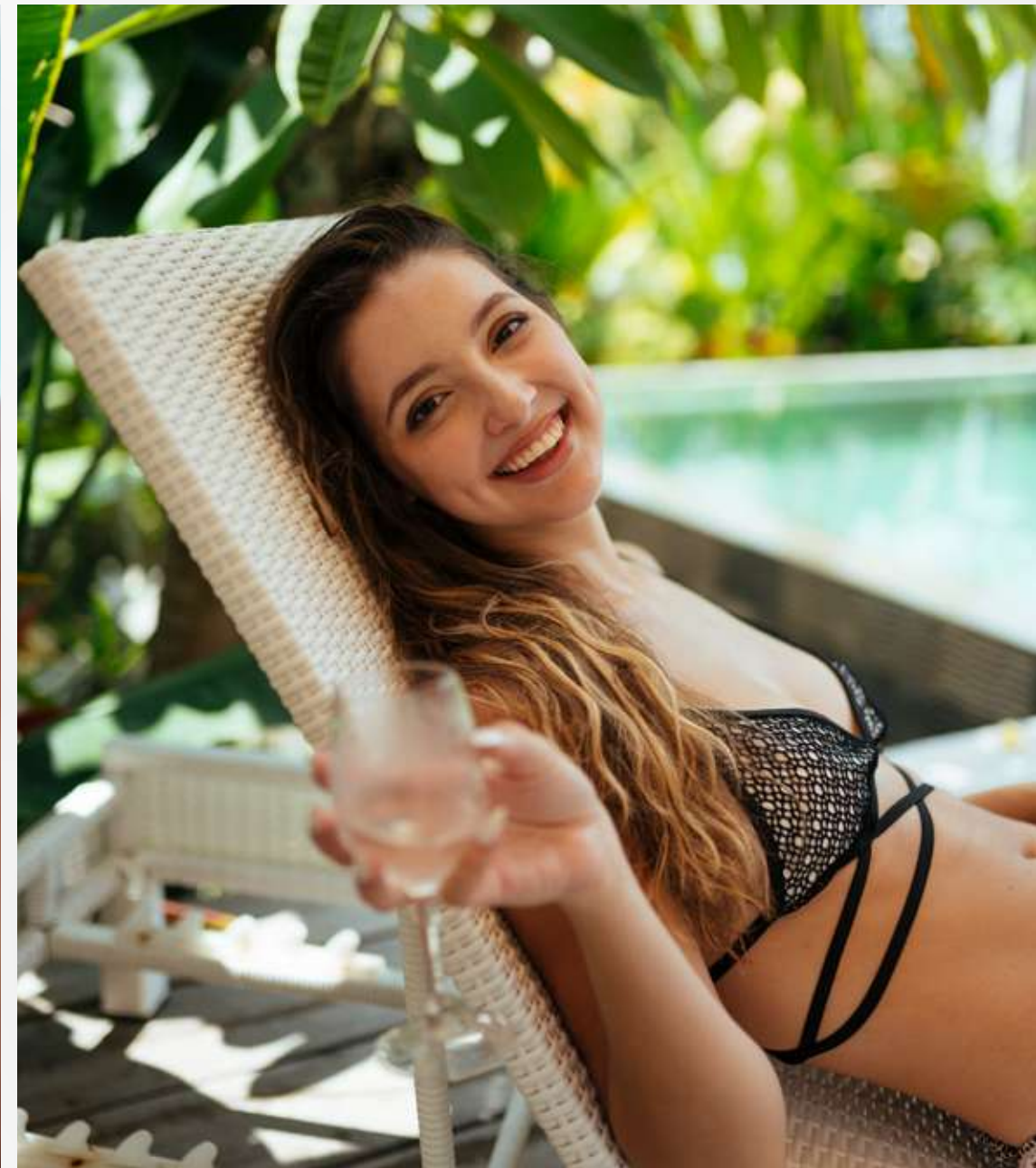
Museum



Club House



A FASCINATING
AND FULL EXPERIENCE
awaits you here





GRANDEUR IN EVERY DETAIL

As is characteristic of all our projects, River Island has the best European finishes, with materials and furniture of the highest quality that imprint supreme elegance to its exquisite design. Buy your apartment with interior design and furniture included. Enjoy from its balconies, the beauties and secrets of a hidden paradise in the best area of Bávaro, Punta Cana.



WHERE LIFE AND EMOTIONS FLOW

As the main center of the project, River Island has an impressive series of pools that are connected by water channels, integrating all the structures of the complex in a beautiful covered setting of gardens and nature trails, creating an environment full of positive emotions, balance and freedom to do what you want at any time.



THE GREAT ATLÁNTIDA

River Island is part of the wonderful Atlántida concept, a complex that revolutionized the Bávaro - Punta Cana area, by integrating multiple and fun experiences around the water into its innovative concentric design, where you will always be the center of all emotions.



Sports area

Pool with a bar

Areas for BBQ and to chill out

Club house

Pool with a bar

Lobby

Green areas

Atlántida

Shopping area

Museum

GRAN ARENA

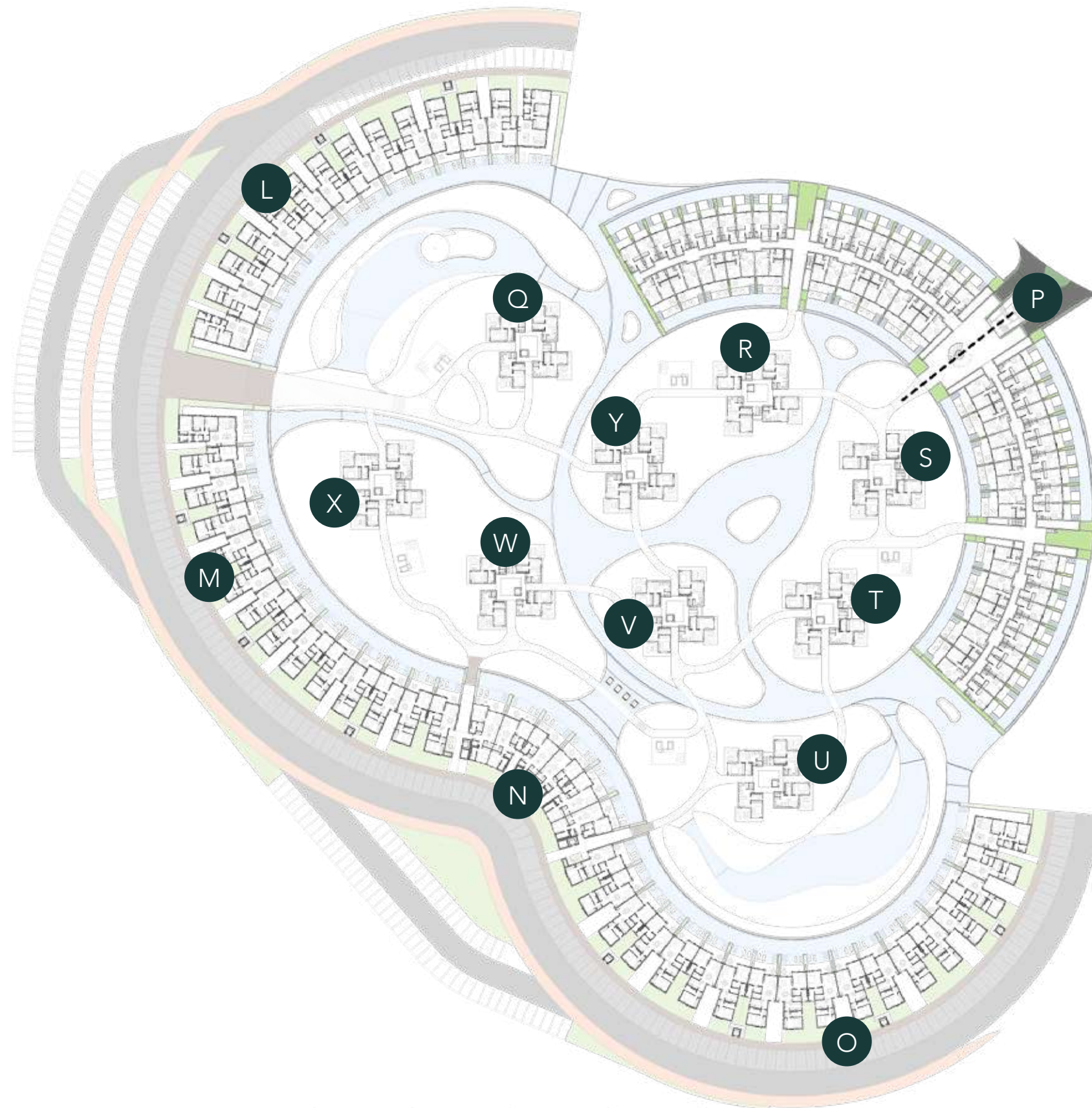
Hotel and entertainment area

An area for events and shows with capacity for **6000 people**, which includes a **Boutique Hotel**. Don't miss the opportunity to be next to the center of major world-class events.



RIVER ISLAND

BY NOVAL PROPERTIES



First Level

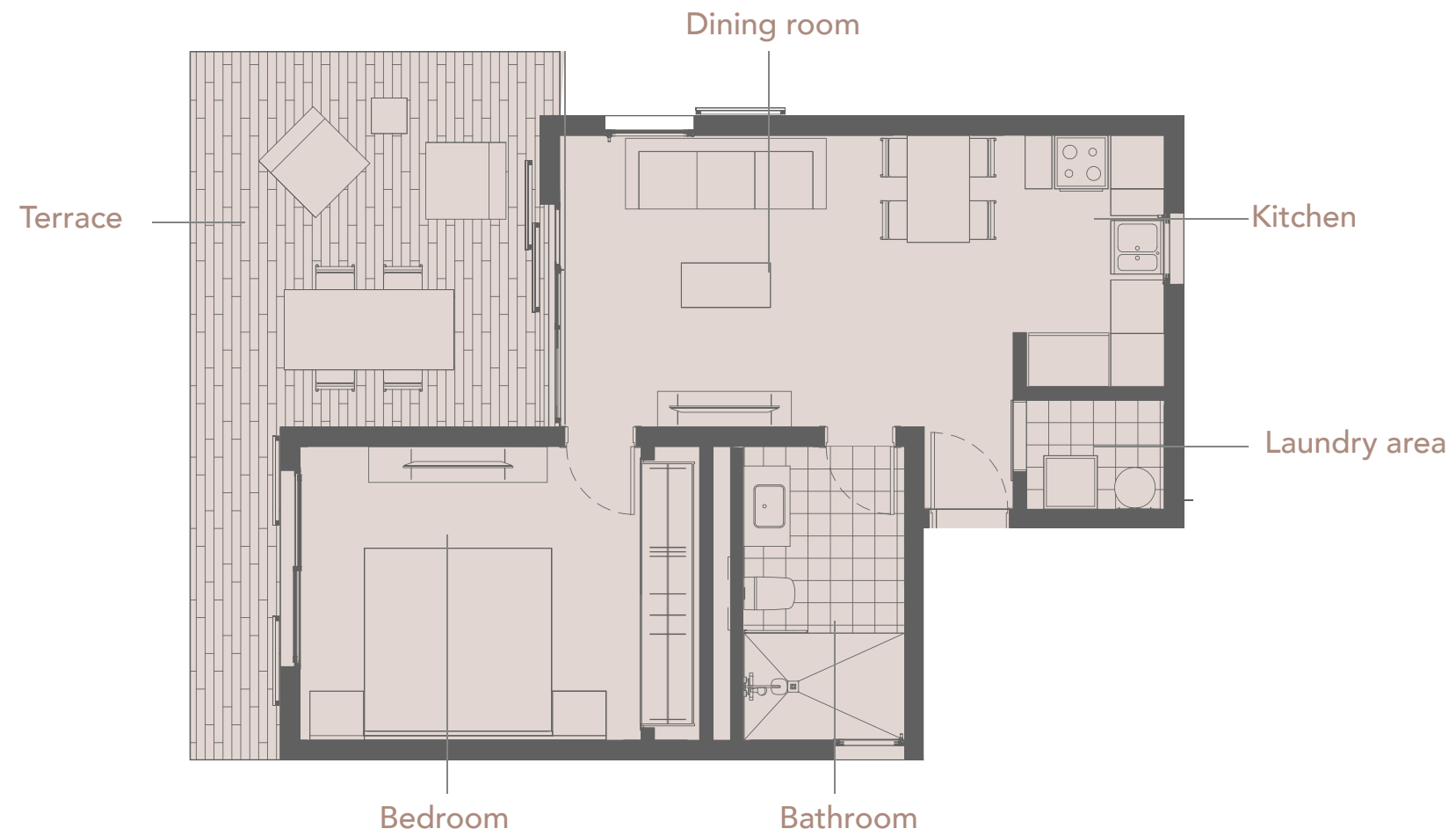
IMMERSE YOURSELF
IN A UNIVERSE OF YOUR OWN

RIVER ISLAND
BY NOVAL PROPERTIES



BUILDING Q - Y

Type T28a



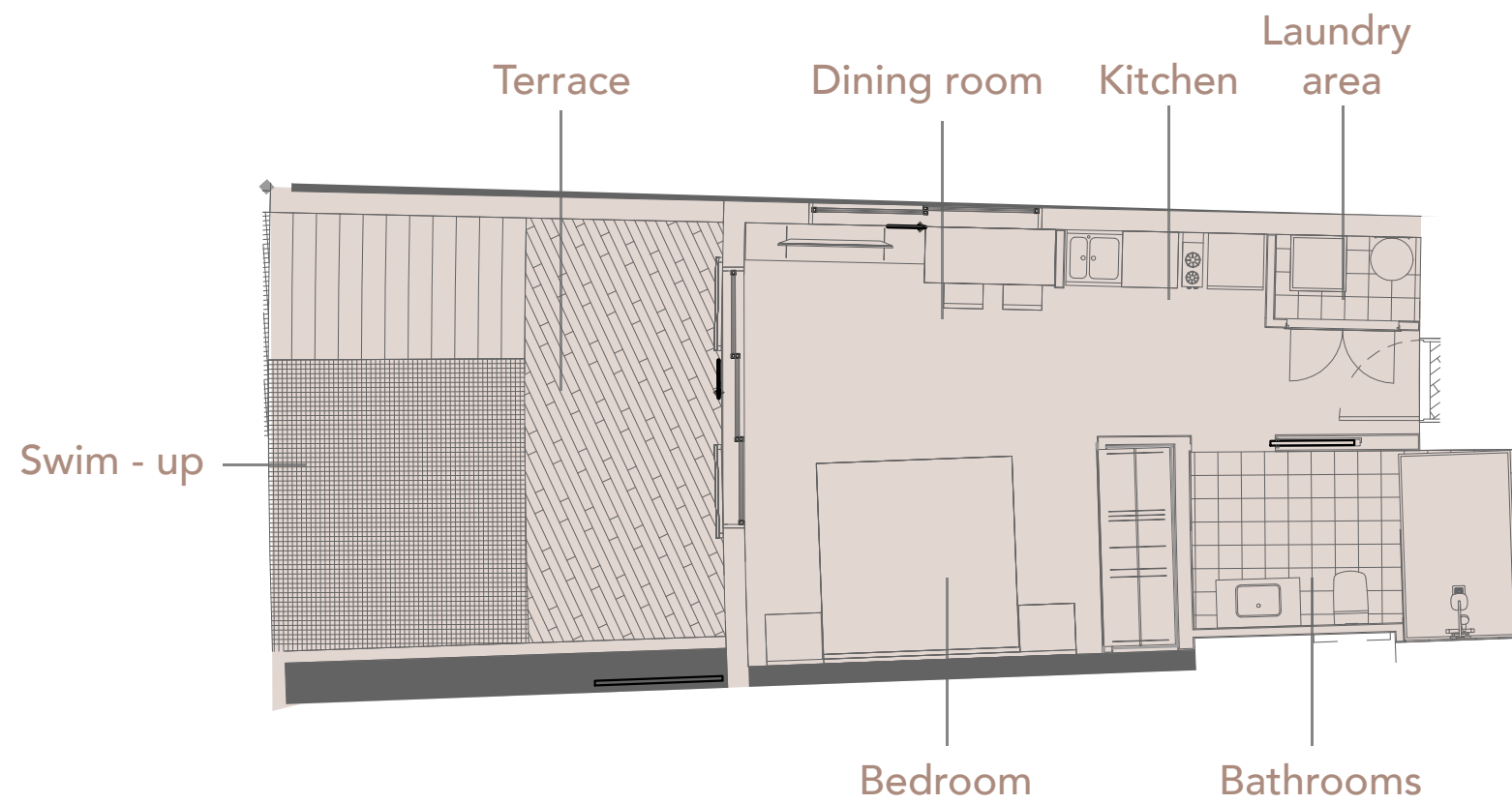
Kitchen 4.53 m² | **Laundry area** 1.88 m² | **Bathroom** 5.92 m²
Bedroom 12.58 m² | **Terrace** 21.00 m² | **Dining room** 18.46 m²



THESE IMAGES ARE DISPLAYED FOR REFERENCE PURPOSES AND IT CAN BE CHANGED.

BUILDING - P

Type T23a

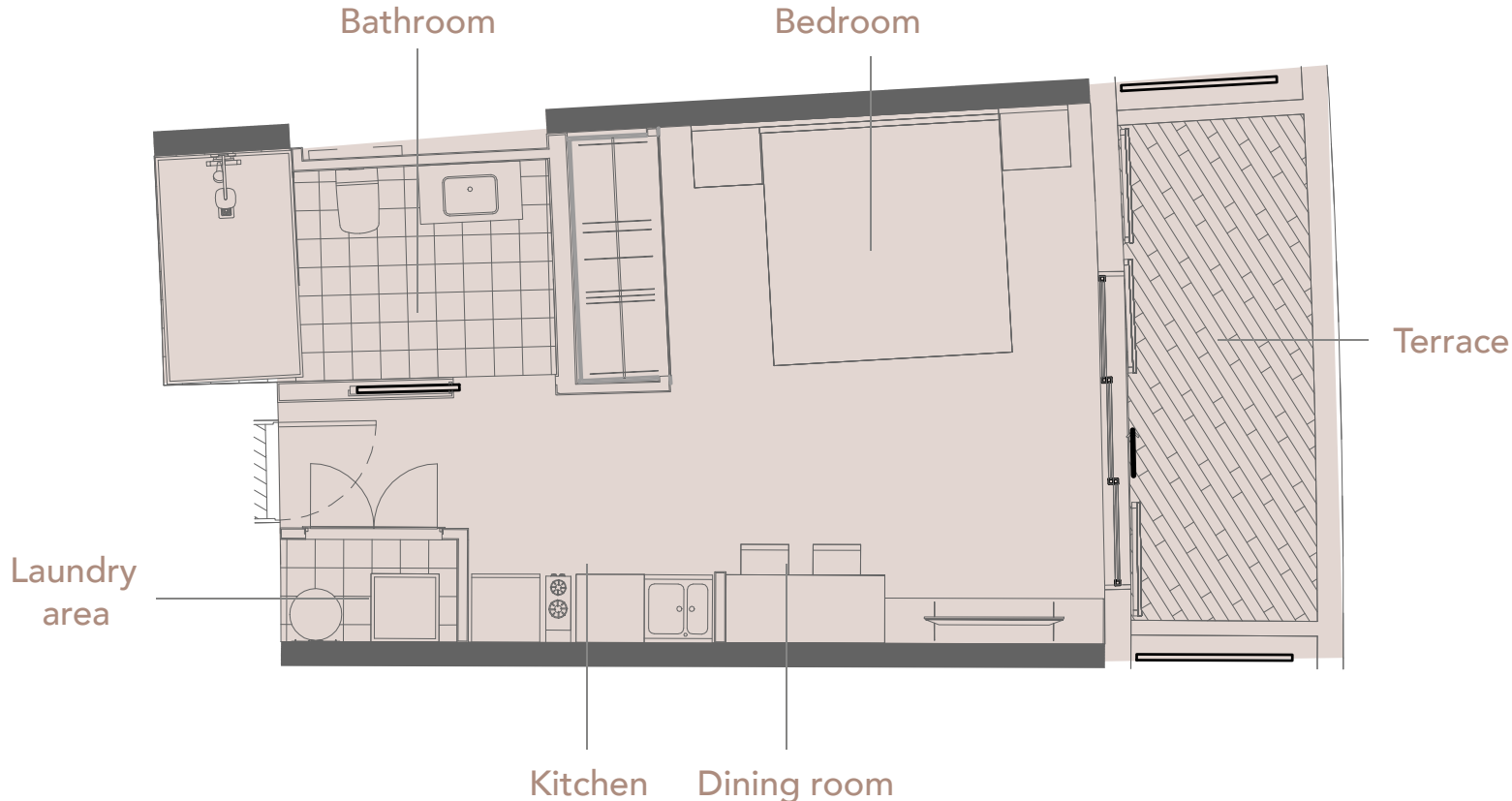


Kitchen 5.32 m² | **Laundry area** 1.31 m² | **Bathrooms** 6.68 m²
Bedroom 16.48 m² | **Terrace** 24.03 m²



BUILDING - P

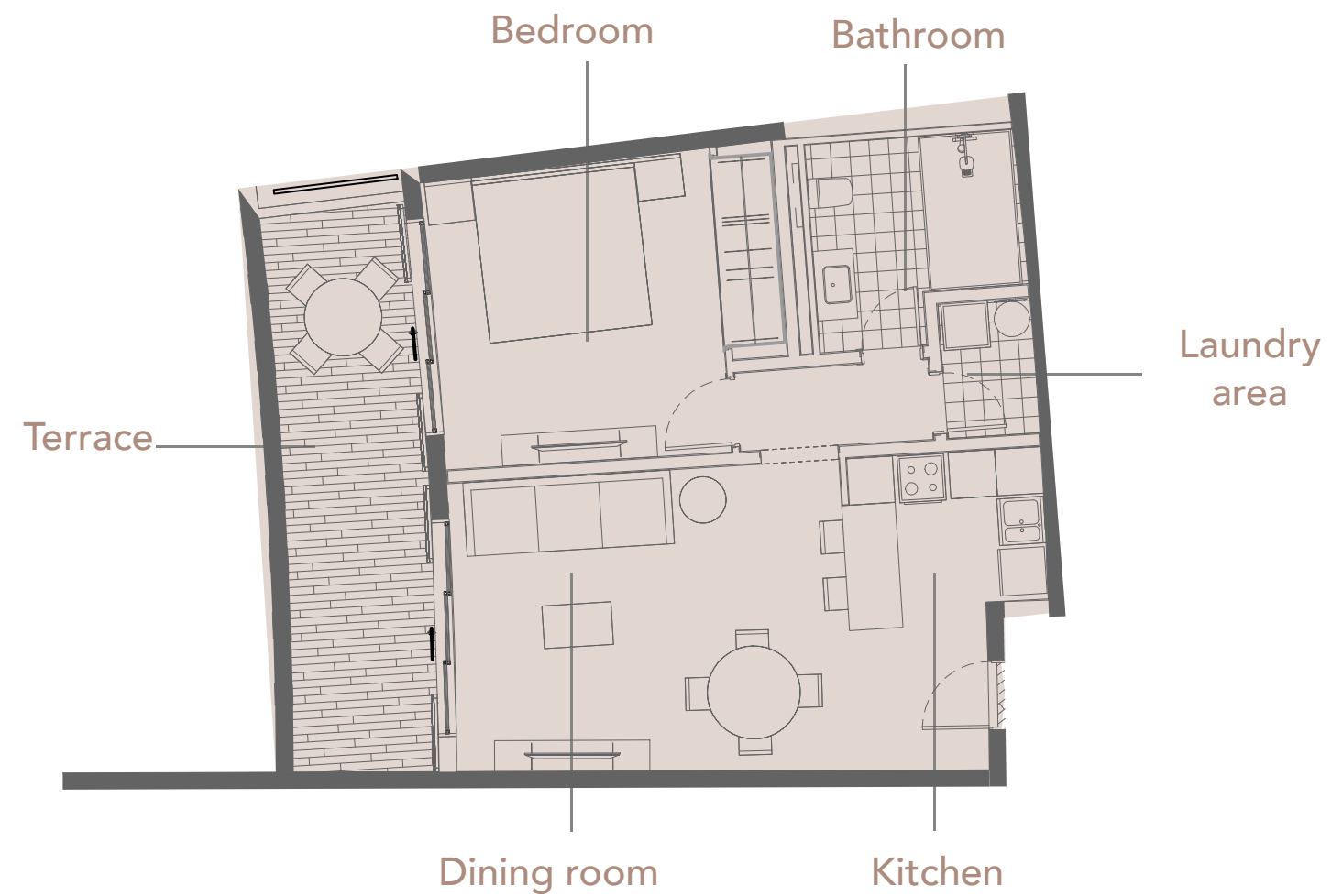
Type T23c



Kitchen 5.32 m² | **Laundry area** 1.31 m² | **Bathroom** 6.68 m²
Bedroom 16.48 m² | **Terrace** 8.18 m²

BUILDING - P

Type T22c

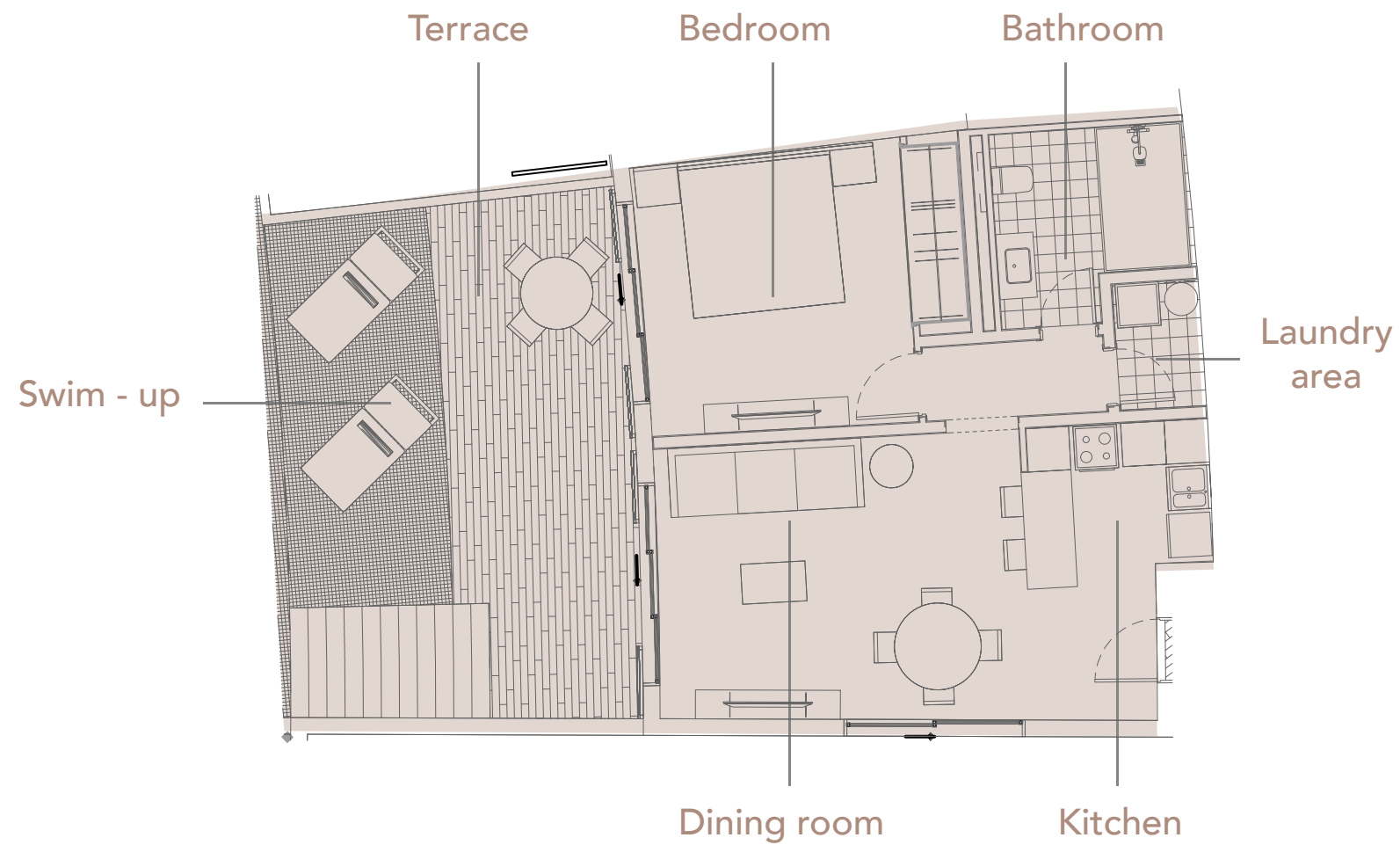


Kitchen 4.94 m² | **Laundry room** 2.08 m² | **Bathroom** 6.39 m²
Bedroom 14.17 m² | **Terrace** 15.73 m² | **Dining room** 19.82 m²



BUILDING - P

Type T22a



Kitchen 4.94 m² | **Laundry area** 2.08 m² | **Bathroom** 6.39 m²
Bedroom 14.17 m² | **Terrace** 35.49 m² | **Dining room** 19.82 m²



An aerial view of a woman with blonde hair, wearing sunglasses and a teal one-piece swimsuit, relaxing on a wooden lounge chair with a white cushion. She is positioned on a tiled deck with a pattern of light beige and teal diamond-shaped tiles. To her right is a swimming pool with clear, rippling blue water. The pool's edge is also tiled with the same diamond pattern. The overall scene conveys a sense of luxury and relaxation in a tropical or resort setting.

THE PROFITABILITY OF INVESTING IN PARADISE

Enjoy from 6% ROI in a project that integrates the best lifestyle assets in a safe place and close to everything; take advantage of the tax exemptions offered by the Confotur Law and our Caribbean Connection services that will offer greater return to your investment, while managing and caring for your property to guarantee its added value.



Payment plan

	First installment	During construction	Final installment
Prompt payment	90%	0%	10%
Prompt payment 50%	50%	30%	20%
Standard	20%	60%	20%

At the signing of a promise of purchase

Against delivery



RIVER ISLAND

BY NOVAL PROPERTIES